

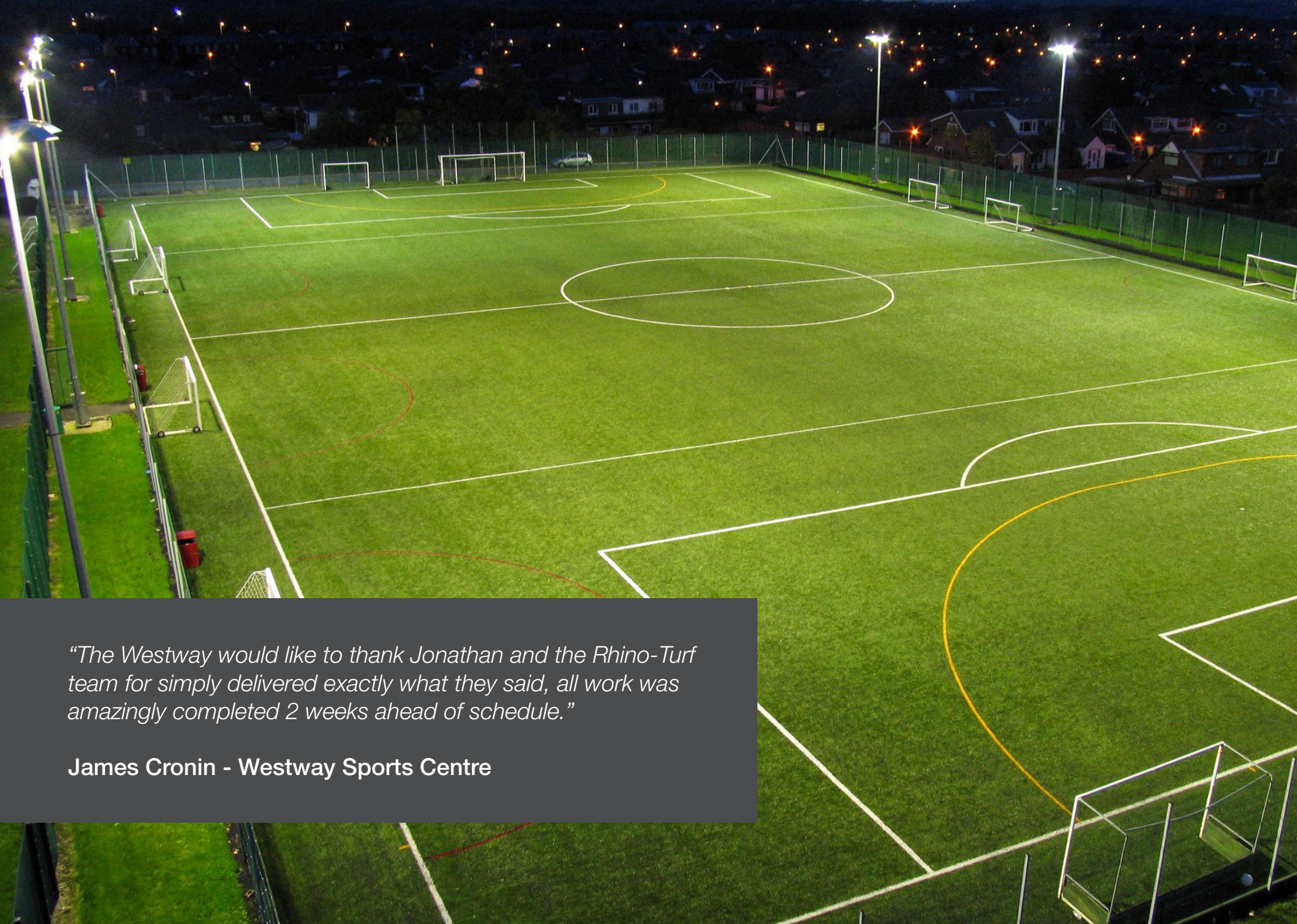


# RHINO TURF

STRENGTH IN  
PERFORMANCE







*“The Westway would like to thank Jonathan and the Rhino-Turf team for simply delivered exactly what they said, all work was amazingly completed 2 weeks ahead of schedule.”*

**James Cronin - Westway Sports Centre**

# About Rhino-Turf

Welcome to Rhino-Turf, the most technically advanced synthetic turf surfaces for sports.

Rhino-Turf is designed by British experts in association with the world’s leading synthetic turf manufacturer and worldwide governing bodies including FIFA, FIH and World Rugby.

The Rhino brand has been synonymous with player preparation and performance for over 25 years.

Rhino-Turf draws on this heritage to offer the very best synthetic turf systems.

Rhino-Turf installations are overseen by world class professionals who ensure that our surfaces meet the highest international standards, perform beyond expectations and above all else, are safe.

This is our philosophy, we call it  
**STRENGTH IN PERFORMANCE.**



# Why Choose Rhino-Turf ?



## ONLY THE BEST IS GOOD ENOUGH

Every Rhino-Turf sports surface is only installed by Rhino-Turf approved installers.

Rhino-Turf works with the most advanced shock pads as part of a performance driven system.

Rhino-Turf is only available through a select network of specialist sports contractors.



## OUR VALUE CANNOT BE BEATEN

High quality yarns in a dense construction guarantees sports performance and best return on investment.

Rhino-Turf systems are tested to the highest standards and kept there by our maintenance company.

Long term recyclability or reuse is an essential consideration in the choice of materials used.



## RHINO-TURF OFFERS PEACE OF MIND

Rhino-Turf's "in house" consultancy service ensures you get the most appropriate surface and system for your needs.

Rhino-Turf carries out its own performance tests, verified by world leading test houses.

Rhino-Turf is the safe surface, the safe choice and safe partner for your sports needs.

# Management

## Jonathan Gallagher

My story in business is very simple, I started life as a professional tennis coach for 8 years and then went into the business of installing and maintaining tennis courts, learning the business from the bottom up.

From there the business evolved, in the UK we are the market leader in the supply and installation of artificial grass for landscaping projects ([www.easigrass.com](http://www.easigrass.com)). This is now complimented with our other brand Rhino-Turf ([www.rhino-turf.com](http://www.rhino-turf.com)) which specialises in the supply and installation of artificial grass for sports fields.

## William Allan

I was brought up in South Africa but left for Europe in 1987 to further my rugby career in Italy and then the UK. I still have a huge passion for all sports and regularly go to watch International Rugby matches.

I joined Jonathan at Rhino-Turf back in 2012 after a stint as a consultant for another synthetic turf company. My focus since 2012 has been on promoting Rhino-Turf globally with particular attention on South Africa.







## World of Rhino-Turf

The Rhino-Turf team is dynamic, resourceful and efficient therefore we are able to work in any location across the globe. We have installed pitches on almost every continent and continue to work in challenging locations on a daily basis.

Once the synthetic turf and the infill are delivered on site our senior installer will travel to the pitch with his tools to begin the installation. He will need local support from a team of roughly 6 to 10 men to help him with the installation. This team does not need to be skilled as our senior technician will teach them the necessary techniques on site.

Although Rhino-Turf is a British Company we are not limited to a particular territory, we can supply and install worldwide and we relish the challenge of a new county to work in.

We are on hand to support our clients 24/7 no matter where they are in the world and no matter what time of day or night.







## Schools & Universities

Rhino-Turf synthetic grass has been designed for heavy usage and is perfectly suited to an educational environment where multiple users of varying abilities and ages may be playing

Although Rhino-Turf products are extremely resilient, quality of performance is not sacrificed for durability. We have designed our yarns and our products to be hard wearing yet soft to touch.

An artificial grass pitch at a school generally needs to cater for more than one sport in order to maximise the usage of the pitch.



At Universities, where a single sport use often dominates, choosing a system, based on player performance, becomes much easier with Rhino-Turf. Our range is simple, easily understood and fully tested.

Occasional users get to play on the best surfaces just like the first team players.





## Sports Centres

**Rhino-Turf systems are perfect for occasional play environments however all of our products have been specifically designed for intense use**

Rhino-Turf products are an ideal surface for commercial football facilities as they are low maintenance, hard wearing and performance driven.

Paying players and members will look for sports centres with the highest calibre facilities. We can guarantee that a Rhino-Turf surface will deliver the performance your members will love and most importantly, will be safe playing on.

## Sports Clubs

**The Rhino-Turf team understand that professional sports clubs are the focal point of a thriving community**

It is imperative the pitches at a professional sports club meet the absolute highest standards for synthetic turf surfaces. Meeting these standards will reflect on the performance of the players and ultimately the results of the club. The pitches will also meet the highest safety requirements protecting the players who independently hold huge value to the club. A first team player being injured can dramatically affect the results of the team, a Rhino-Turf surface will reduce this risk.







# Football

## Synthetic Turf for Football

Artificial grass pitches are far from being a new concept however synthetic turf has recently taken the football industry by storm as modern products are a huge improvement from those in the 1980s and 1990s. Playing football on artificial grass is now fully supported by FIFA and is being used as a playing surface by top-flight football clubs all over the world.

Artificial turf surfaces are the future for any sports facility club or school when attempting to reduce long-term costs, improve usage times and ensure and high level of surface performance.







## Rugby

**Rugby has always been the beating heart of Rhino-Turf**

Rhino-Turf was first conceived with a mission in mind to create the finest synthetic rugby surface on the market. Perfecting a synthetic rugby product requires extensive knowledge combined with the most sophisticated materials.

Once the initial product was created this was followed by years of researching, testing and adjusting. Rugby Turf has to be the precise combination of softness and resilience and with our VT60 we have created a best-in-class rugby turf.

## Hockey

**Rhino-Turf pushes FIH Certified Fields around the world**

Whilst international hockey is still played on water based surfaces, the advance in sand dressed products now means that the playing performance can be virtually identical. This is commonly known as a Hybrid Hockey system but not to be confused with the full Hybrid system for Football and Rugby.

Rhino-Turf systems come with suitable pre-fabricated or insitu shock pads and are only available from selected partners and are always installed by Rhino-Turf installers using the best equipment, to ensure every pitch is perfect.







## Tennis & Cricket

**We begun installing artificial grass tennis courts 30 years ago and we haven't looked back since then**

Our techniques and technology have changed and improved since then but our love for tennis has remained as steadfast as it was all those years ago.

### Perfect cricket wickets from Rhino-Turf

Natural cricket wickets are notoriously difficult to maintain, especially to the standards expected of professional players so the answer is to make the practice wickets synthetic.



## Golf & Multi-sports

**Golf is the latest sport to embrace the benefits of artificial turf**

All over the world more and more 9 and 18 hole golf course are being built entirely in synthetic turf, especially in areas where water is scarce. Maintenance is also dramatically reduced. We are able to supply products for greens, fairways and tees. All of our synthetic grass golf products are manufactured using the latest technology and the most resilient nylon yarns available on the market.

Rhino turf multi-sports surfaces are designed with schools and community play areas in mind. Multi Use Games Areas (also known as MUGAs) are perfect for these facilities as they generally need to cater to more than two sports. Our multi-sports surfaces have been developed to meet different sporting combinations, normally football, hockey, tennis, basketball as well as achieve the expected global standards.







## Product Range

**VT Range:** A specially created mix of yarns for high-end performance in football and rugby. First developed for Chelsea Football Club for their high-tech training academy in Cobham. Using the innovative Rhino-Turf Thatch Concept we have a fully integrated root zone protection for the profiled monofilament yarn fibres, offering infill stability leading to infill splash reduction which results in less infill migration and a more uniform playing field. A safer system with **Strength in Performance**.

**HF Range:** Our HF range represents the yarn latest technology - a soft, curly, texturized, monofilament yarn which offers a surface with true ball bounce, fast pace and long term **Strength in Performance**. Ideal for hockey fields to meet both Global and National standards but also the perfect solution for multi sport surfaces including tennis, netball, cricket and golf as well as recreational football.

**Other Ranges:** Rhino-Turf also design and supply golf systems using both polyethelene and nylon fibres as well as the older fibrillated yarns for more cost effective multi play areas including running tracks.





## Base / Shockpad

### Performance pad or shock pad layer

The use of a shock absorbing performance layer underneath an artificial grass sports surface assists in the performance and durability of the entire system. Many clubs and schools choose to use a shock pad in their system in order to enhance the performance of the pitch and to offer increased safety for the players.

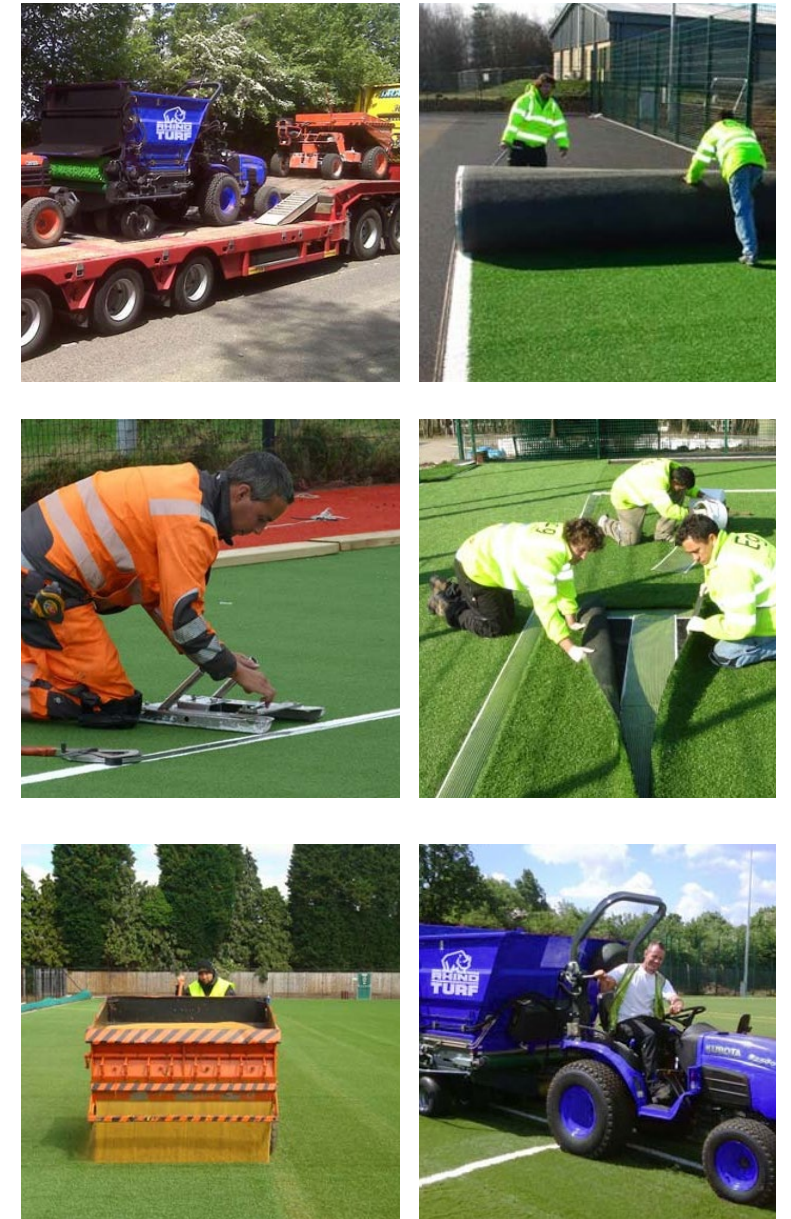
Performance pads are obligatory for Rugby pitch systems in order to meet World Rugby safety requirements.

## Installation

### Rhino-Turf surfaces are meticulously installed by our highly skilled technicians, raising the bar on international standards

At Rhino-Turf we are able to ensure that our new surfaces are installed to the highest standards wherever the pitch is located around the globe. We also recognise that it is not possible to achieve pitch perfection with a product alone. It is a pointless exercise investing in a high-end product if the installation is not carried out correctly by trained professionals.

Creating the ultimate pitch that performs well, stands the test of time and is above all safe, is a combination of product selection and installation methods. This is especially true if the surface needs to be tested to International standards.







# Testing & Accreditation

Testing is an essential step in the construction of a new pitch

Testing a pitch guarantees a quality installation as well as assuring the owner that the surface is safe and will meet the expected life span. At Rhino-Turf we continually strive, alongside our clients, to create the finest synthetic playing surfaces in the world so it makes sense for our clients to receive the final certificate illustrating that their pitch has been installed as they requested and is safe for their players.

We work with the world’s leading independent test houses all over the globe. The chosen test house will send a field test technician out to the pitch to conduct the testing and certification process.



# Maintenance

Rhino-Turf promises **STRENGTH IN PERFORMANCE**, but we need your help

Without a commitment to maintaining your facility and protecting your investment, there is always a danger that outside influences can affect performance. That is why Rhino-Turf surfaces come, not only with a maintenance guide, but an individually planned regime.

Over 30 years of synthetic turf use shows that pitches maintained regularly will last longer and play better. Rhino-Turf monitors all surfaces provided during the guarantee period, and will advise on maintenance as part of the on-going service.







# Rhino Techzone

The Techzone has been designed and developed to cater for players of all levels; minis can happily play all year round, the juniors can run those important plays time and again and the vets and touch teams can play on late in to the evening, all on a consistent surface built for maximum usage, enjoyment and sustainability.

The Techzone incorporates the highest quality training equipment available, with a safe and durable to train on Rhino-Turf 3G surface designed to deliver the best training and player performance experience available.

## Training Area

After many years of development and listening to coach, player and club feedback Rhino-Turf has created a simple and effective training area that incorporates the highest quality world leading technical training equipment.

## 365 Days Usage

With a fully functional 3G surface designed to enable 24/7 usage and take the wear and tear away from every club's groundsman's prized natural grass 'first team pitch'.

## Performance & Value

Techzone is a complete year round sports training facility, designed specifically with player performance and club values in mind.

- ✓ Portable
- ✓ Fully Scalable
- ✓ Speedy Installation
- ✓ Safe
- ✓ Durable
- ✓ No Planning Permission
- ✓ Finance Available





# Our Clients

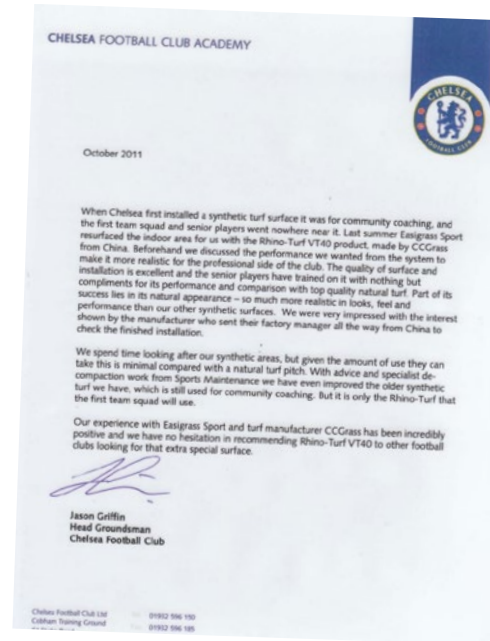
## Chelsea Football Club

Last summer Easigrass Sport resurfaced the indoor area for to with the Rhino-Turf VT40 product. Beforehand we discussed the performance we wanted from the system to make it more realistic for the professional side of the club. The quality of surface and installation is excellent and the senior players have trained on it with nothing but compliments for its performance and comparison with top quality natural turf. Part of its success lies in its natural appearance — so much more realistic in looks, feel and performance than our other synthetic surfaces. We were very impressed with the interest shown by the manufacturer who sent their factory manager all the way from China to check the finished installation.

We spend time looking after our synthetic areas, but given the amount of use they can take the cost is minimal compared with a natural turf pitch. It is only the Rhino-Turf that the first team squad will use.

Our experience with Easigrass Sport and turf manufacturer has been incredibly positive and we have no hesitation in recommending Rhino-Turf VT40 to other football clubs looking for that extra special surface.

### Head Groundsman Chelsea Football Club



# Our Partners



Easigrass supplies and installs artificial grass for landscaping projects worldwide. Synthetic grass is used in a variety of applications, thanks to its unique versatility. Artificial Grass for landscaping by the worlds grass installation specialists.



Sports Maintenance Services (SMS) are one of UK's premier service providers to the sport and leisure industry and provide a comprehensive maintenance service for all hard and synthetic sport surfaces.



Sports Surface Solutions (SSS) are one of UK's leading synthetic turf installers with over 20 years of experience and installed 100's of synthetic surfaces for main contractors and clients alike.



Xtraction were the first company in the UK and Europe to invest in the TurfMuncher equipment which allows the existing turf to be ripped up and disposed of in an ethical and environmentally responsible manner, with an economic benefit to all interested parties.





37 Felsham Road, Putney,  
London, SW15 1AY

**Email:** [info@rhino-turf.com](mailto:info@rhino-turf.com)

**Telephone:** +44 (0)8455194822